



AIR SEPARATOR

Tangential Air Separators: 2" - 24" with Strainer ASME

300 PSIG Working Pressure

Construction

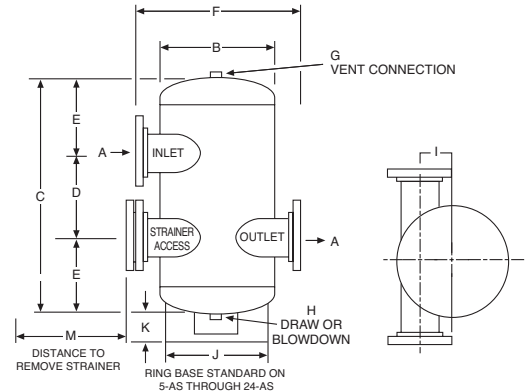
Body	ASME Approved Steel
Flanges	ASME 300 Lb
Removable Strainer	304 Stainless Steel

Performance

Maximum Operating Temperature	350°F (176.7°C)*
Maximum Working Pressure	300 PSIG (20.7 bar)
Warranty	1 Year

Application

- Creates a low velocity vortex that separates and removes entrained air from circulating water or anti-freeze.
- For use in closed, non-potable water systems.
- Designed and constructed per ASME Code Section VIII, Division 1.



ASME Models

Model Number	Dimensions												Sq In	Shipping Weight		Clearance to Remove Strainer
	A	B	C	D	E	F	G	H	I	J	K	M	Strainer Screen Free Area	Lbs	Kg	In
	In	In	In	In	In	In	In	In	In	In	In	In				
2-AS	2	10	23	8	7½	17	¾	¾	3	-	-	14	33	81	37	12
2½-AS	2½	10	23	8	7½	17	¾	¾	3	-	-	14	40	97	44	13
3-AS	3	10	23	8	7½	17	¾	¾	3	-	-	14	45	108	49	15
4-AS	4	12	25	10	7½	21	¾	¾	3½	-	-	16½	78	126	57	17
5-AS	5	16	34½	12	11¼	24	¾	¾	4¼	12¾	4⅝	21½	120	360	163	22
6-AS	6	18	39	14	12½	26	¾	¾	4¼	14	4⅝	23	186	448	203	24
8-AS	8	24	52	18	17	32	¾	¾	5¼	16	4⅝	29	313	675	306	30
10-AS	10	30	59½	22	18¾	40	¾	¾	7¼	24	4⅝	35	491	1350	612	36
12-AS	12	36	70	26	22	46	¾	¾	7¼	30	12⅝	40	644	1710	776	45
14-AS	14	42	87	30	28½	56	¾	¾	13	30	13⅜	48	810	3960	1796	49
16-AS	16	48	90	32	29	64	3	3	15	42	12½	56	969	5400	2449	59
18-AS	18	54	102	36	33	64	3	3	16	42	12⅝	62	1517	6300	2858	62
20-AS	20	60	100	30	35	70	3	3	19	45	6⅝	68	1860	9000	4082	70
22-AS	22	60	119	48	35½	70	3	3	18	45	7	68	2073	9900	4491	74
24-AS	24	72	136	43	46½	82	3	3	22	45	8	80	2712	12600	5715	80

*Available at 375°F (189.4°C)

All dimensions and weights are approximate.

Job Name _____	Notes _____
Engineer _____	_____
Contractor _____	_____
P.O. No. _____	_____
Sales Rep. _____	_____
Model No. _____	_____

